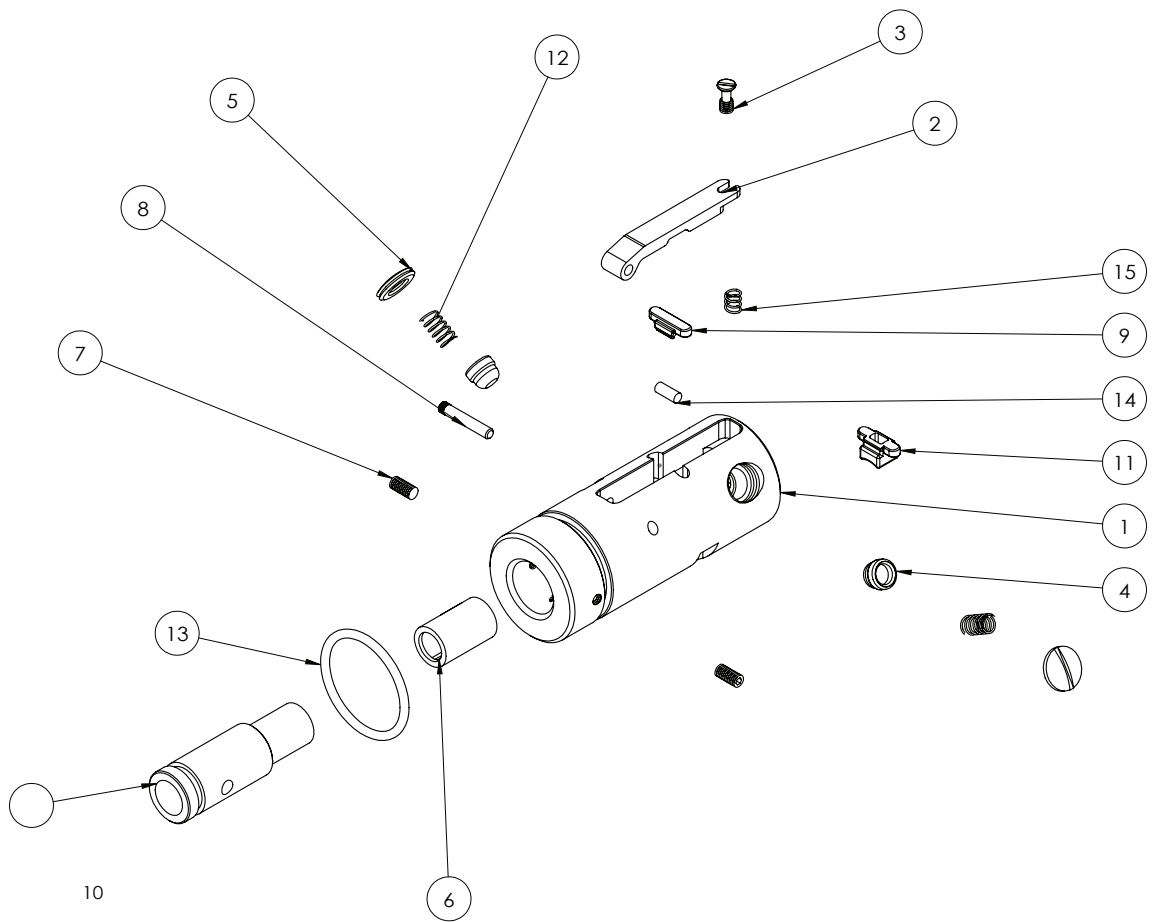




**ARCHWICK**

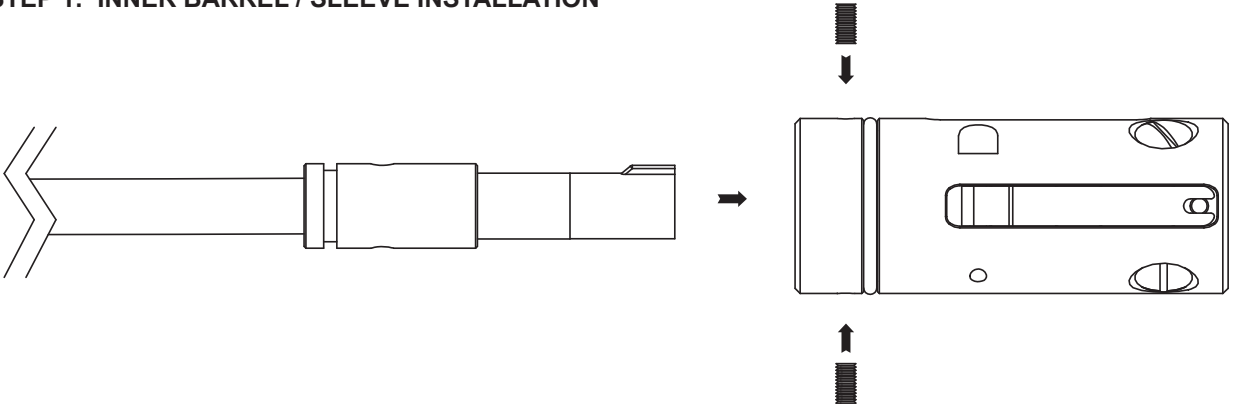
**PINNACLE HOP UP UNIT SET UP GUIDE**



10

<b>1</b>	<b>Chamber Body</b>
<b>2</b>	<b>Hop Up Lever</b>
<b>3</b>	<b>Top Adj. Screw</b>
<b>4</b>	<b>BB Detent (2pcs)</b>
<b>5</b>	<b>BB.D Screw (2pcs)</b>
<b>6</b>	<b>Hop Up Bucking</b>
<b>7</b>	<b>M3 x 6 Set Screw (2pcs)</b>
<b>8</b>	<b>2 x 15 Cross Pin</b>
<b>9</b>	<b>Hop Up Lever Plate</b>
<b>10</b>	<b>Inner Barrel Sleeve</b>
<b>11</b>	<b>Over Sized Large Hop Up Lever Plate</b>
<b>12</b>	<b>BB.D Spring (2pcs)</b>
<b>13</b>	<b>Chamber Body External O-Ring</b>
<b>14</b>	<b>Hop Up Nubbin</b>
<b>15</b>	<b>Hop Up Lever Spring</b>

## STEP 1: INNER BARREL / SLEEVE INSTALLATION

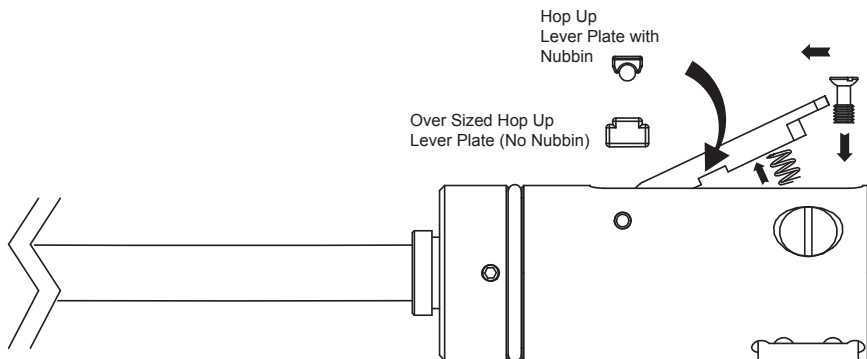


1. Place inner barrel through Part 10- Inner barrel sleeve, install hop up bucking, and slide entire assembly into the chamber body.
2. Ensure that the barrel is orientated in the right position, with the hop up window of the barrel pointing up, and the 2 holes on the barrel sleeve are in the 3 and 9 o'clock position.
3. If installed properly, the holes should line up with the 2 holes on the side of the chamber body. Install M3 x 6 set screw, tighten with 1.5mm Allen Wrench.

## ARCHWICK PINNACLE HOP UP UNIT

## STEP 2: HOP UP PLATE SELECTION / INSTALLATION

The AW Pinnacle Hop Up Chamber set comes with 2 sets of Hop Up Lever Plates, the regular version uses a traditional nubbin (Parts 9 & 14). This set up is recommended for lighter BB weights of 0.36g or lower. For use with heavier BBs, we recommend using the Oversized Hop Up lever plate set up (Part 11). The Oversized version does NOT use a tradition Nubbin; the Lever Plate itself is rubber coated, and it has an increased surface area that allows the creation of more backspin or lift on the BBs. Do note that the Oversized version may require more fine tuning when setting the Hop Up.

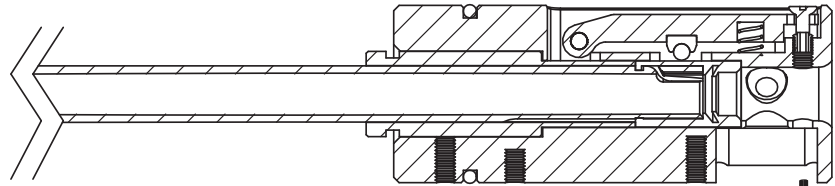


1. Unscrew Top Adjustment Screw (Part 3) with a small Flat Head Screwdriver, once the screw has been removed, lift up the Hop Up Lever Arm (Part 2) and install the desired Hop Up Lever Plate under the cut out in the Lever Arm.
2. Install Top Adjustment Screw back into place, make sure the Top Lever Spring is in its proper location.

### STEP 3: SETTING THE HOP UP

The AW Pinnacle Hop Up Chamber set has 2 Hop Up Adjustment Points. There is a TDC (Top Dead Center) adjustment screw located on the top of the Chamber Body. This adjustment point requires modification to the outer barrel of your Airsoft Gun. This modification should only be performed by an experienced owner, and ARCHWICK bears no responsibility for any damages caused. **DO THIS MODIFICATION AT YOUR OWN RISK!!!**

The second adjustment point is located at the bottom of the hop up body, where the magazine feed neck goes in.

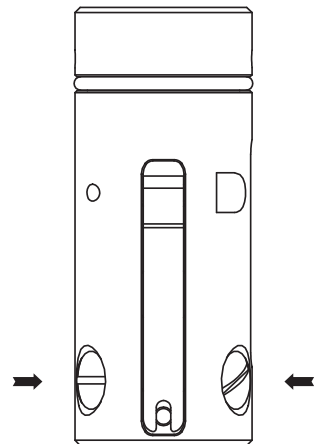


1. To adjust via Top Adjustment Point - Insert a small flat head screwdriver, rotate **CLOCKWISE** to **INCREASE HOP UP**, **COUNTERCLOCKWISE** to **DECREASE HOP UP**.
2. To adjust via Bottom Adjustment Point- Insert a 1.5mm Allen Wrench, rotate **COUNTERCLOCKWISE** to **INCREASE HOP UP**, **CLOCKWISE** to **DECREASE HOP UP**.



### STEP 4: BB DETENT SCREW ADJUSTMENT (FINE TUNING)

Located on the back of your Chamber Body are the BB Detent screws (Part 5). Tightening and Loosening these screws will control the travel distance of the BB Detents inside the Chamber Body. Depending on the diameter of your Air nozzle, the Detents can become too tight or too loose. If the Detents are too tight, your bolt will become more difficult to push forward into the chamber. If the Detents are too loose, the Detents may not apply enough pressure to prevent the BBs from rolling forward. The Detents should be just tight enough to stop BBs from moving forward, while being as least intrusive as possible to the bolt's travel.



1. To increase BB Detent pressure, use a small slothead screwdriver and turn the screws **CLOCKWISE**. Apply equal pressure on **BOTH** sides.
2. To decrease BB Detent pressure, use a small slothead screwdriver and turn the screws **COUNTERCLOCKWISE**. Apply equal pressure on **BOTH** sides.